



**SenSit**

Diagnostics range  
for HUMAN

Diagnostics for all





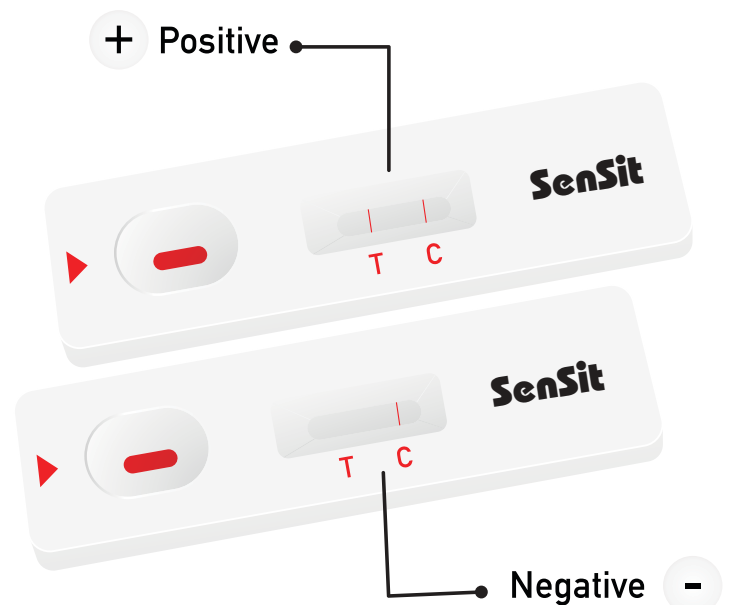




*Our diagnostic solutions are focused on the world's critical health needs which includes infectious disease, cardiac, biomarkers, drug of abuse, hormone analysis and more.*

## ABOUT **UBIO!**

Located in Cochin, Kerala State, ubio is one of the leading manufacturer of in vitro diagnostics devices in India. From its inception in the year 2008 as an Assay Development company, ubio has grown up into a full-fledged IVD manufacturer contributing largely to human and animal health sector. The products are manufactured under ISO 13485 certified Quality Management System, in its state of the art GMP certified manufacturing facility. ubio's new manufacturing facility commissioned in 2014, has the capacity to manufacture 200000 rapid test devices per day. This fully automated facility consists of CLASS 10000 assembly suits, under <10% RH, Automated coating, Lamination and assembly lines, Fully automated ELISA manufacturing Line, SPCE based Biosensor lines, CLASS 10000 Sterile Buffer filling facility with fully automated vial and bottle filling lines, Biosafety III culture room, cold rooms, fully equipped Quality control laboratory and R&D laboratories for Assay development, Molecular Biology and Bio-engineering



## Features and Benefits

- Rapid – One Step Immunochromatographic assays
- Accurate – High sensitivity and good correlation with other test methods
- Simple to use – One step after sample collection
- Fast – Reliable result in 10 minutes

- Immediate – Treatment and Management after identifying the cause
- Economical kit size – 1T | 10T | 25T
- Shelf Life – 24 months
- Storage – +2C – +30C
- No refrigeration required

# SENSIT RAPID

*A broad portfolio of diagnostic tests that support physicians decisions.*

*Rapid diagnostics provides accurate, immediate and reliable results, right where you need them. IVD'S are tests that can detect disease, conditions and infection, done on samples such as blood, serum, urine and various body secretions.*

Code	Product Name
<b>INFECTIOUS DISEASE</b>	
S001-01	Dengue NS1
S001-02	Dengue Ab/NS1
S001-03	Dengue IgG/IgM
S002-01	Leptospira IgM
S002-02	Leptospira IgG/IgM
S004-01	Filariasis Ab
S004-03	Filariasis IgG/IgM
S005-01	Malaria Ab
S005-02	Malaria Ag (pf/pan)
S005-03	Malaria Ag (pf/pv)
S005-04	Malaria Pf. Ag
S005-05	Malaria Pv. Ag
S005-06	Malaria Ag/Ab
S005-07	Malaria Pan. Ag
S005-08	Malaria Pv/Pf Ab
S006-01	TB MPT 64
S006-02	TB LAM
S008-01	Syphilis Ab
S009-01	Leishmaniasis Ab
S009-03	Leishmaniasis Ab (rk28)
S009-04	Leishmaniasis Ab (rk39)
S015-01	Vibrio Cholera Ag
S017-01	Influenza Type A
S018-01	Influenza Type B
S023-01	Brucella IgM
S023-02	Brucella IgG
S023-04	Brucella Ag
S024-01	HIV I & II Ab
S026-01	HCV Ab
S027-01	HBS Ag
S028-01	HBV/HCV
S030-01	Dengue IgG/IgM- Dengue NSI Combo

Code	Product Name
S031-02	Anthrax Spore Ag Test
S031-03	Anthrax PA toxin Ag Test
S031-04	Anthrax Ag
S031-05	Anthrax PA LF Ab Test
S034-01	Vibrio cholera Ag
S034-02	Vibrio Cholera O1/O139 Ag
S035-01	Giardia Ag
S037-01	Brucella IgG/IgM Combo
S038-01	Scrub Typhus Ab
S040-01	Streptococcus A
S041-01	Influenza A+B
S042-01	Chikungunya IgG/IgM
S043-01	Toxoplasma IgG/IgM
S044-01	Listeria Ab Test
S045-01	M. Bovis Ab Test
S046-01	Brucella Ab Test
S051-01	Vitamin D Rapid Test
S053-01	HAV IgG/IgM
S064-01	COVID 19 Ag Rapid Test
UBMD007	COVID 19 RTPCR Kit
<b>GASTROINTESTINAL DISEASE</b>	
S012-01	Adeno virus Ag
S016-01	H.pylori Ab
S013-01	Rota virus Ag
S014-01	Rota Adeno Ag
S016-02	H.pylori Ag
S007-05	Typhoid IgG
S007-06	Typhoid IgM
S007-07	Typhoid IgG-IgM Combo
S007-08	Typhoid Ag
<b>CARDIAC MARKERS</b>	
S019-01	Troponin I
S022-03	Troponin/Myosin
S070-01	D-dimer
S071-01	NT-proBNP

Code	Product Name
S019-02	Troponin T
S020-01	Myosin
S021-01	Creatine kinase-MB (CK-MB)
QSENSE-R	
<b>CANCER MARKERS</b>	
S075-01	Alpha Fetoprotein (AFP)
S076-01	Carcinoembryonic antigen (CEA)
S077-01	Fecal occult blood (FOB)
S078-01	Prostate-specific antigen (PSA)
S079-01	Transferrin
S080-01	Nuclear Matrix Protein 22
<b>INFLAMMATORY MARKERS</b>	
S047-01	Procalcitonin test
S048-04	C-Reactive protein Rapid test- Saliva
S048-01	C-Reactive protein Rapid test- Wholeblood/Serum/Plasma
S083-01	RF IGM
S255-01	Total IgE
S081-01	Interleukin 6
S082-01	Micro Albumin
<b>HORMONES/FERTILITY</b>	
S010-01	Luteinizing hormone (LH)
S113-01	Follicle-stimulating hormone (FSH)
S108-01	Estradiol
S100-01	HCG Pregnancy kit

<b>DRUG OF ABUSE</b>	
AMP	I BAR
BUP	I BZO
COC	I CLO
COT	I
MDMA	I EtG
FEN	I GAB
HCD	I HMO
KET	I KRA
LSD	I THC
EDDP	I MTD
MET	I MPD
MOP	I OPI
OXY	I PCP
TRA	I TCA
ALCOHOL	

# CLINICAL CHEMISTRY TEST

*QSENSE-C product portfolio offers a wide range of diagnostics on clinical chemistry, Immunoturbidimetry and Nephelometry platforms. QSENSE-C clinical chemistry reagents are highly stable and require less frequent calibration.*

Code	Product Name
SC201-01	Iron
SC202-01	Alkaline Phosphatase
SC203-01	Albumin
SC204-01	Bilirubin (Total & Direct)
SC205-01	Urea Nitrogen (BUN)
SC206-01	Calcium o-Cresolphthalein complexone (ocpc)
SC207-01	Calcium Arsenazo (ARSIII)
SC208-01	Cholesterol
SC209-01	Creatinine
SC210-01	Glucose
SC211-01	HDL (High-density lipoprotein) Precipitant
SC212-01	Serum glutamic-oxaloacetic transaminase (SGOT)
SC213-01	Serum Glutamic Pyruvic Transaminase (SGPT)
SC214-01	Total Protein
SC215-01	Triglycerides
SC216-01	Urea Berthelot
SC217-01	Uric Acid
SC218-01	Phosphorus
SC219-01	Chloride
SC220-01	Creatine kinase-N-acetyl-cystein (CK-NAC)
SC021-01	Creatine kinase-MB (CK-MB)
SC222-01	Amylase
SC223-01	Acid Phosphatase
SC224-01	Gamma GT
SC225-01	Lactate dehydrogenase (LDH)
SC226-01	Magnesium
SC227-01	TIBC/UIBC
SC228-01	Creatinine (Enzymatic)
SC229-01	G6PD Quantitative
SC230-01	G6PD Quantitative

SC082-01	Microalbumin TEST KIT
SC232-01	Glycosylated /HbA1 Hemoglobin Kit
SC190-01	HbA1c Test Kit
SC234-01	Prothrombin Time (PT)
SC235-01	Activated Partial Thromboplastin Time (APTT)
SC236-01	Adenosine Deaminase Test Kit
SC237-01	Ammonia Test Kit
SC238-01	Cholinesterase Test Kit
SC239-01	HDL Cholesterol Direct
SC240-01	LDL Cholesterol Direct
SC241-01	Sodium
SC242-01	Potassium
SC243-01	Lipase

## IMMUNOTURBIDIMETRY

Code	Product Name
ST083-01	RF Turbilatex
ST048-01	CRP Turbilatex
ST246-01	ASO Turbilatex
SL083-01	RF Latex
SL048-01	CRP Latex
SL249-01	ASO Latex

## NEPHELOMETRY

Code	Product Name
SN250-01	Antistreptolysin O (ASO)
SN048-01	C-reactive protein (CRP)
SN083-01	rheumatoid factor (RF)
SN190-01	HbA1C
SN254-01	Cystatin C
SN082-01	Micro Albumin
SN256-01	Ferritin
SN255-01	IgE
SN070-01	D-Dimer

# URINE CHEMISTRY STRIPS



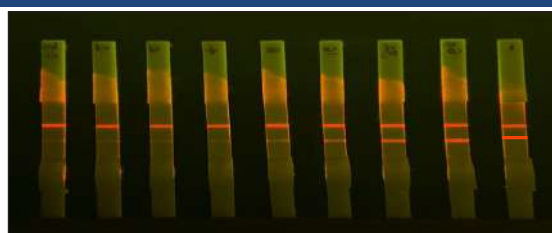
## QSENSE-U

Code	Product Name
SU001-01	Urine strips Glucose
SU001-02	Urine strips Protein
SU001-03	Urine strips Ketone
SU001-04	Urine strips- Glucose & Ketone
SU001-05	Urine strips Albumin and creatinine
SU001-06	Urine strips- Albumin & Creatinine, Calcium
SU001-07	Urine strips Protein, pH, Glucose
SU001-08	Urine strips Glucose, Protein, Sp. Gravity, pH
SU001-09	Urine strips Glucose, Protein, Ketone, pH, Blood
SU001-10	Urine strips Glucose,protein, Ascorbic acid, pH, Blood
SU001-11	Urine strips Glucose, Protein, Ascorbic acid, pH, Sp. Gravity
SU001-12	Urine strips Glucose, Protein, Ketone, pH, Sp.Gravity, Blood,Bilirubin, and Urobilinogen
SU001-13	Urine strips Glucose,Protein, Ketone, pH, Blood, Bilirubin,Urobilinogen, Nitrite and Leucocytes

SU001-14	Urine strips Glucose, Protein, Ketone, pH, Sp.Gravity, Blood,Bilirubin ,Urobilinogen, Nitrite and Leucocytes
SU001-15	Urine strips Glucose, Protein, Ketone, pH, Sp.Gravity, Blood,Bilirubin,Urobilinogen, Nitrite, Ascorbic Acid and Leucocytes
SU001-16	Urine strips Glucose, Protein, Ketone, pH, Sp.Gravity, Blood,Bilirubin,Urobilinogen, Nitrite, Microalbumin and Leucocytes
SU001-17	Urine strips 12-G-P-KPH-SPG-B-BIL-URB-NO3MIA-ASC-LEU
SU001-18	Urine strips Glucose, Protein, Ketone, pH,Sp.Gravity,Blood,Bilirubin,Urobilinogen,Nitrite, Microalbumin, Ascorbic Acid,Creatinine,Calcium and Leucocytes
SU001-19	Urine strips Glucose and Protein
SU001-20	Urine strips Glucose, Protein, Ketone
SU001-21	Urine strips Glucose, Protein, pH, Blood
SU001-22	AMP-Urine Test
SU001-23	THC-Urine Test
SU001-24	OPI-Urine Test
SU001-25	COC-Urine Test
SU001-26	ALC-Urine Test

## QSENSE-F

### FLOURESCENT IMMUNOASSAY PLATFORM



→ Control line  
→ Test line

*Time resolved Fluorescence Immunoassay helps in the rapid detection of analytes and thus facilitates a better disease diagnosis monitoring and management. Fluorescent Assay platforms offers a high sensitivity and much broader detection range for various analytes.*

#### DIABETES

Code	Product Name
SF190-01	HBA1C

#### INFLAMMATION

Code	Product Name
SF048-01	C-Reactive protein (CRP)
SF047-01	Procalcitonin
SF192-01	Serum amyloid A (SAA)
SF081-01	Interleukin 6 (IL6)

#### CARDIAC

Code	Product Name
SF019-01	Cardiac Troponin-I (cTnI)
SF021-01	CK-MB
SF020-01	Myosin
SF071-01	NT-PROBNP
SF070-01	D-Dimer
SF194-01	Heart-type fatty acid binding protein (H-FABP)

#### THYROID

Code	Product Name
SF102-01	T3
SF104-01	T4
SF101-01	Thyroid stimulating hormone (TSH)

#### HORMONE

Code	Product Name
SF100-01	HCG
SF010-01	LH (Luteinizing hormone)
SF113-01	FSH (Follicle-stimulating hormone)
SF198-01	Prolactin (PRL)
SF098-01	Progesterone
SF049-01	AMH (Anti-Mullerian hormone)

#### ANEMIA

Code	Product Name
SF256-01	Ferritin







# QSENSE-E

The infectious disease landscape is everchanging with outbreaks, mutations, emerging pathogens and growing resistance, which indirectly demand for an accurate and highly sensitive diagnostic platforms. QSENSE-E, the ELISA platforms offers a high sensitive and reliable confirmation.

INFECTIOUS DISEASE	
Code	Product Name
SE004-01	Filaria Ab ELISA Kit
SE07-02	Typhoid IgM ELISA Kit
SE009-01	Leishmania Antibody ELISA Kit
SE024-01	HIV 1/2 Antibody ELISA
SE026-01	HCV Ab ELISA
SE027-01	HBS Ag ELISA
SE039-01	TB Feron ELISA
SE008-01	SYPHILIS
SE002-01	LEPTOSPIRA
SE001-01	DENGUE
SE257-01	TORCH

NON-INFECTIOUS PANEL	
Code	Product Name
SE019-01	Anti-thyroid peroxidase (ANTI-TPO)
SE020-01	ANTI-MPO
SE086-01	TOTAL IGE
SE101-01	TSH
SE010-01	LH
SE113-01	FSH
SE090-01	Growth Hormone (GH)
SE091-01	BETA HCG
SE092-01	Prostate-specific antigen (PSA)
SE093-01	Cancer antigen 125 (CA125)
SE094-01	Cancer antigen 199 (CA199)
SE095-01	Carcinoembryonic antigen (CEA)

SE096-01	Alpha Feto Protein (AFP)
SE097-01	Cancer antigen 15-3 (CA15-3)
SE107-01	Progesterone
SE099-01	Testosterone
SE258-01	Cortisol
SE116-01	T3
SE117-01	T4
SE048-01	C-Reactive protein (CRP)
SE003-01	Thyroid stimulating hormone ELISA Kit
SE039-01	Human IFN-γ ELISA
SE049-01	Anti-mullerian hormone (AMH) ELISA Kit
SE050-01	Anti-cyclic citrullinated peptide (CCP) ELISA Kit
SE051-01	Vitamin D ELISA Kit

## INSTRUMENTS

Code	Product Name
QSENSE-FR	FLOURESCENT POCT READER
QSENSE-UR	URINE CHEMISTRY ANALYSER
QSENSE-CR	NEPHLOMETER



## ubio Biotechnology Systems Pvt Ltd

#15A, Biotechnology Zone Kinfra Hi-Tech Park, Kalamassery, Cochin, India -683503

Call Us +91-484-2970043 | +91 9778424871

E-mail : [contact@ubio.co.in](mailto:contact@ubio.co.in) | Web: [www.ubio.in](http://www.ubio.in)